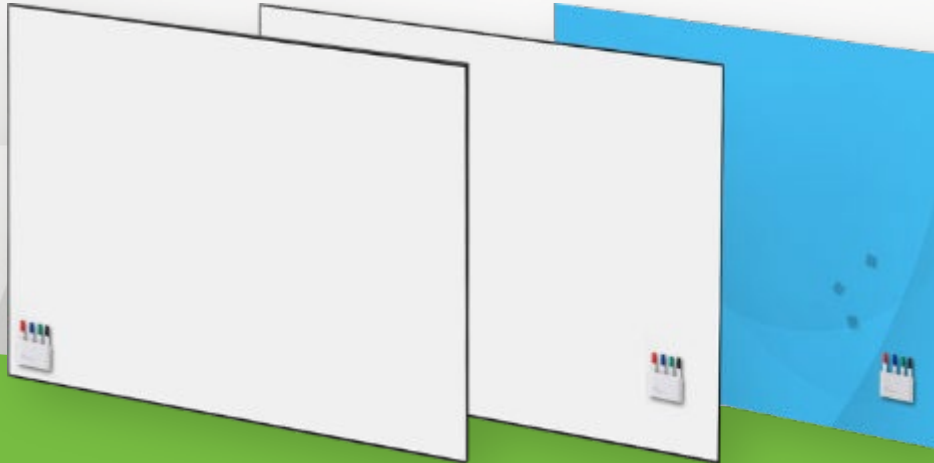


COLLABORATIVE DESIGN

Creating Collaborative Opportunities



CREATING A FIXED FOCAL POINT FOR ALL YOUR VISUAL MANAGEMENT NEEDS

Our range of great value, high-quality fixed work walls is designed to meet your space and resources requirements while keeping your team inspired and encouraged to collaborate, brainstorm and stay agile.

From adhesive film to beautiful glass and the latest anti-bacterial ceramic surfaces, all of our fixed boards are magnetic, easy to clean and maintain, can be self-installed, and are customisable to your needs (size, shape and colour).

It's truly a unique range that's going to take your space to the next level.



High Quality



Magnetic



Cost-Effective



Customization
Options



Can be
Self-Installed



Antibacterial

CONTACT US FOR MORE DETAILS & CUSTOMISATION OPTIONS:

info@cdspace.com.au / 0414 831 894

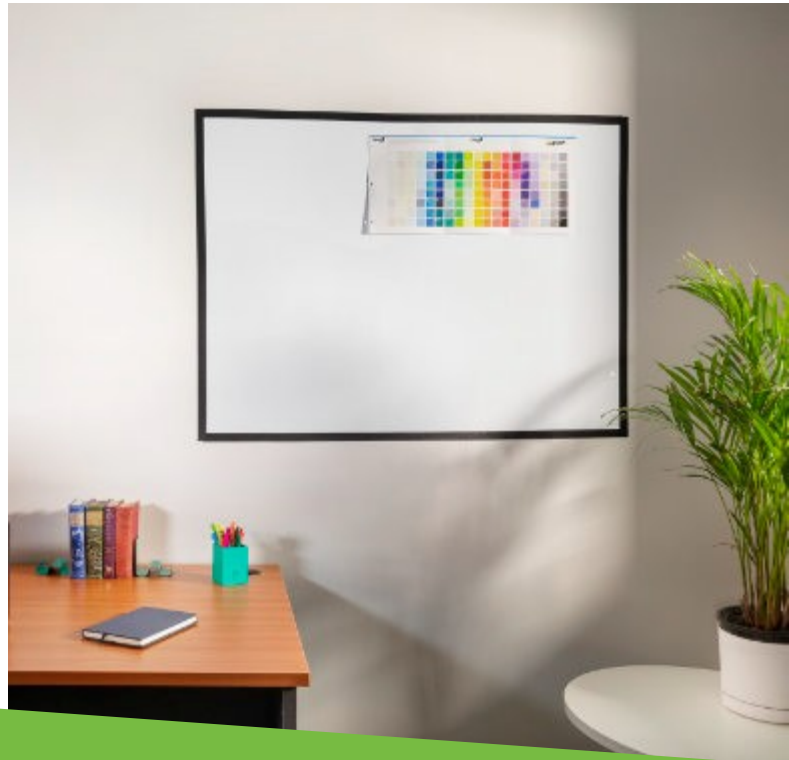
collaborativedesignspace.com.au

THE EZY VM - MAGNETIC WHITEBOARD FILM

The easy visual management (Ezy VM) adhesive whiteboard sheet will help you turn any wall or door into a whiteboard.

While it's an ideal cost-effective solution for your business its flexibility also makes it ideal for your use around your home.

The self-adhesive nature of Ezy VM means it is easy to install on any surface (concrete, timber, glass and plasterboard), and the sizing is flexible so it can perfectly fit wherever you need it.



Customization
Options



Magnetic



Can be
Self-Installed



Affordable



Fits All
Surfaces

WHITEBOARD SURFACE COLOURS

White

AVAILABLE SIZES

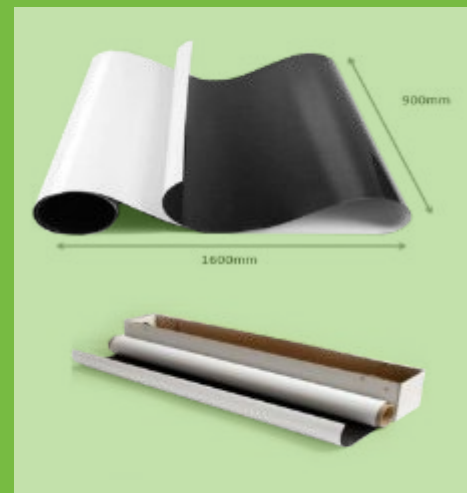
Width – 900mm, 1000mm or 1200mm

Length – 500mm-2400mm

*contact us for a custom size/shape

PRICE RANGE

Standard surface: \$61-\$220



[PURCHASE ONLINE](#)

OR CONTACT US FOR MORE DETAILS & CUSTOMISATION OPTIONS:

info@cdspace.com.au / 0414 831 894

collaborativedesignspace.com.au

e3 WALL WHITEBOARDS

Our fixed wall boards are made from e3 ceramic steel, with slim line frame and concealed hardware and has the highest quality writing surface. This premium and sleek finish ensures no stains, easy maintenance and long durability.

The boards are available in various standard sizes, with either matt black, or satin silver frame, and can be easily self-installed (or installed by us if required).

HYGIENIC SURFACE

All the benefits of the e3-ceramic steel board with the addition of silver ions incorporated into the surface for an anti-microbial capability that is

designed to eliminate 99% of bacteria and various enveloped viruses* in 24 hrs.

This latest development in material science introduces silver micro particles that slowly release silver ions over time to actively work to fight microbes for the lifetime of the product. This makes it ideal for use in demanding environments where cleanliness is vital.

*The family of enveloped viruses includes, for example, the current coronavirus (SARS-Cov-2), SARS (SARS-Cov), MERS (MERS-CoV) and Influenza A.




Ceramic Steel


Magnetic


Can be Self-Installed


Affordable


Antibacterial

WHITEBOARD SURFACE COLOURS

 White

FRAME COLOURS

 Satin Silver  Matte Black

AVAILABLE SIZES

Small: 900 x 600mm - \$203 / \$265**

Medium: 900 x 1200mm - \$352 / \$460**

Large: 900 x 1500mm - \$432 / \$565**

Extra Large: 1200 x 1800mm - \$660 / \$870**

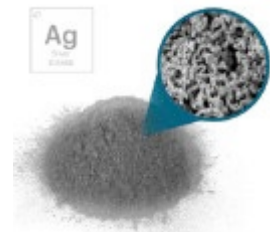
*contact us for a custom size/shape

**hygienic surface prices 

WARRANTY LIFETIME

ABOUT SILVER-IONS

Since ancient times, Silver has been known to be effective against a broad range of microorganisms. These silver micro particles penetrate the cell wall, disrupt the respiration of the cellular membrane and attach to the DNA of the microbe, inhibiting reproduction.



[PURCHASE ONLINE](#)

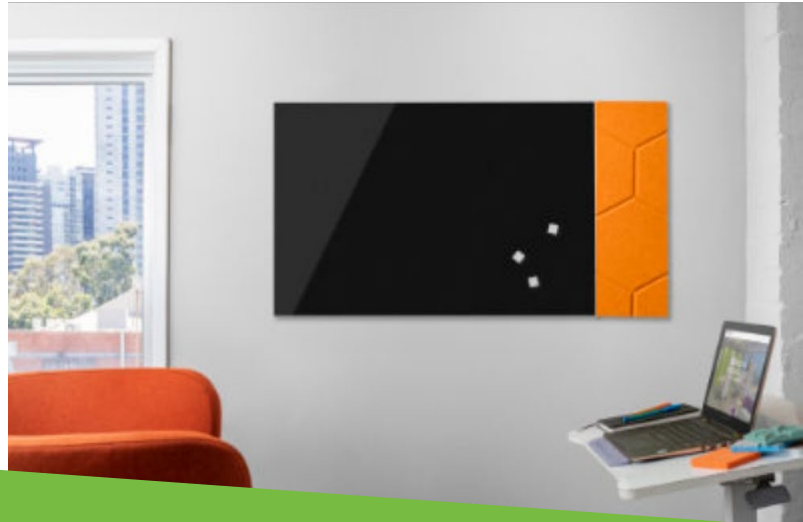
OR CONTACT US FOR MORE DETAILS & CUSTOMISATION OPTIONS:

info@cdspace.com.au / 0414 831 894
collaborativedesignspace.com.au

WALL - GLASS BOARDS

A frameless and magnetic beautiful glass board that will not only add a functional feature, but will also upgrade the look and feel of any space.

The glass boards are available in various colours and sizes and have concealed hardware that makes the surface ideal in case you want to place multiple glass wallboards side by side or add an acoustic feature next to it and turn it into a design feature.



Safety Glass



Magnetic



Affordable



Can be
Self-Installed



Colourful

COLOURS



Available in a wide range of
Dulux Colours

STANDARD SIZES

Small: 900 x 600mm - \$270

Medium: 900 x 1200mm - \$435

Large: 1200 x 1500mm - \$515

Extra Large: 1200 x 1800mm - \$785

Jumbo: 1200*2000 mm - \$850

WARRANTY

LIFETIME

Manufactured in Australia



PURCHASE ONLINE

OR CONTACT US FOR MORE DETAILS & CUSTOMISATION OPTIONS:

info@cdspace.com.au / 0414 831 894

collaborativedesignspace.com.au